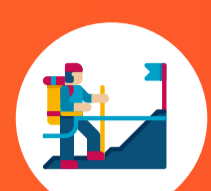


# The UK's Most Popular Holiday Lodge Destinations

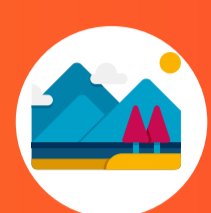
## The Lake District



Breathtaking landscapes, serene lakes, and picturesque villages.



Ideal for hiking, boating, and exploring Windermere and Keswick.

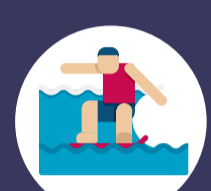


Perfect for nature lovers and peaceful retreats.

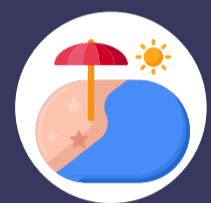
## Cornwall



Stunning coastline, beautiful beaches, and charming fishing villages.



Great for surfing, coastal walks, and landmarks like St. Ives and the Eden Project.



Popular amongst beach lovers and families.



## Scottish Highlands



Dramatic mountains, deep lochs, and rich history.



Enjoy hiking, wildlife watching, and exploring castles like Eilean Donan.



Ideal for rugged landscapes and adventure seekers.

## Norfolk Broads



Network of rivers and lakes, perfect for boating and wildlife spotting.



Enjoy sailing, bird watching, and exploring historic towns like Norwich.



Great for water enthusiasts and tranquil escapes.



## The Cotswolds



Traditional stone buildings, rolling hills, and picturesque villages.



Ideal for hiking, boating, and exploring Windermere and Keswick.



Ideal for those who appreciate historic charm and scenic countryside.

## Devon



Moorland and coastal beauty with charming towns and villages.



Great for beach outings, exploring Dartmoor, and visiting Torquay.



Perfect for families and mixed coastal and rural experiences.



## Isle of Wight



Beautiful beaches, rolling countryside, and historic attractions.



Enjoy beach days, coastal paths, and island life.



Popular for families, couples, and groups.